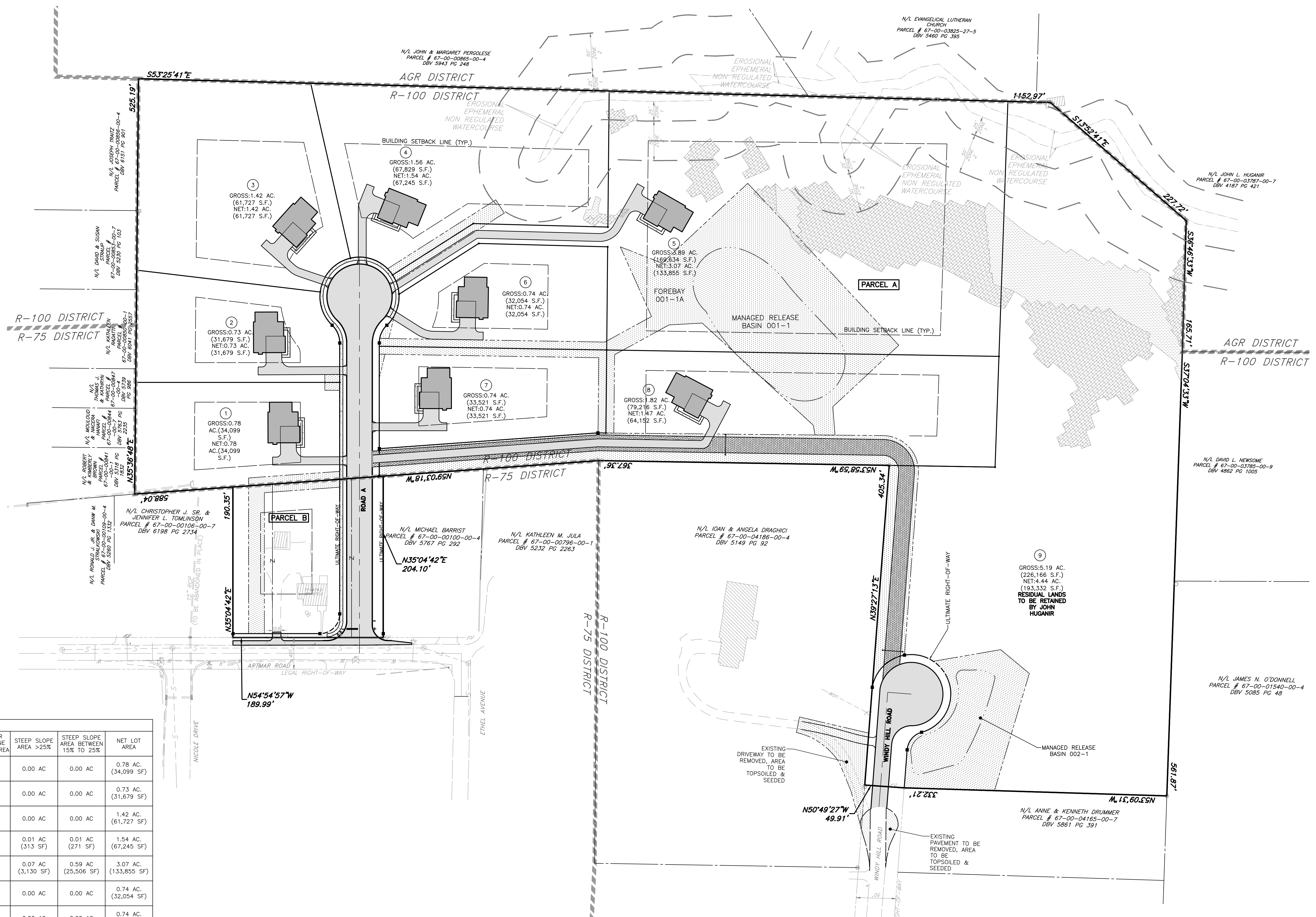
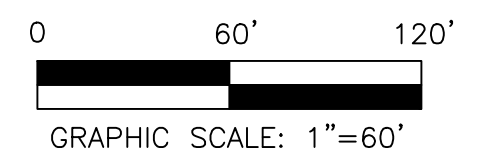


- EXISTING FEATURES LEGEND**
- SLANTED TEXT DENOTES EXISTING FEATURE
- CONCRETE MONUMENT FOUND
  - IRON PIN FOUND
  - SITE BENCHMARK
  - PROPERTY LINE
  - ADJONER LINE
  - LEGAL RIGHT OF WAY
  - EASEMENT LINE
  - BUILDING/STRUCTURE
  - WATERCOURSE
  - CONCRETE CURB
  - EDGE OF PAVE
  - EDGE OF DRIVE
  - 15-25% STEEP SLOPES
  - +25% STEEP SLOPES
  - ZONING DISTRICT LINE
  - RIPARIAN BUFFER
- PROPOSED LEGEND**
- VERTICAL TEXT DENOTES PROPOSED FEATURE
- BUILDING
  - ROAD CENTERLINE
  - DEPRESSED CURB
  - EDGE OF PAVING
  - CURB
  - LOT NUMBER
  - MATCH LINE
  - BITUMINOUS PAVEMENT
  - EMERGENCY ACCESS
  - SIDEWALK
  - EASEMENT



LOT TABLE								
LOT #	LOT AREA TO ULTIMATE RIGHT-OF-WAY	FLOODPLAINS/WETLANDS/WATER AREAS	ACCESS LEG AREA OF FLAG LOT	ACCESS PORTION OF LOT W/ WIDTH <70 FT	OVERHEAD UTILITY LINE OR UNDERGROUND GAS PIPELINE EASEMENT/RIGHT-OF-WAY AREA	STEEP SLOPE AREA >25%	STEEP SLOPE AREA BETWEEN 15% TO 25%	NET LOT AREA
1	0.78 AC. (34,099 SF)	0.00 AC	0.00 AC	0.00 AC	0.00 AC	0.00 AC	0.00 AC	0.78 AC. (34,099 SF)
2	0.73 AC. (31,679 SF)	0.00 AC	0.00 AC	0.00 AC	0.00 AC	0.00 AC	0.00 AC	0.73 AC. (31,679 SF)
3	1.42 AC. (61,727 SF)	0.00 AC	0.00 AC	0.00 AC	0.00 AC	0.00 AC	0.00 AC	1.42 AC. (61,727 SF)
4	1.56 AC. (67,829 SF)	0.00 AC	0.00 AC	0.00 AC	0.00 AC	0.01 AC (313 SF)	0.01 AC (271 SF)	1.54 AC. (67,245 SF)
5	3.89 AC. (169,634 SF)	0.00 AC	0.00 AC	0.16 AC (7,143 SF)	0.00 AC	0.07 AC (3,130 SF)	0.59 AC (25,506 SF)	3.07 AC. (133,855 SF)
6	0.74 AC. (32,054 SF)	0.00 AC	0.00 AC	0.00 AC	0.00 AC	0.00 AC	0.00 AC	0.74 AC. (32,054 SF)
7	0.74 AC. (33,521 SF)	0.00 AC	0.00 AC	0.00 AC	0.00 AC	0.00 AC	0.00 AC	0.74 AC. (33,521 SF)
8	1.82 AC. (79,216 SF)	0.00 AC	0.35 AC (15,064 SF)	0.00 AC	0.00 AC	0.00 AC	0.00 AC	1.47 AC. (64,152 SF)
9	5.19 AC. (226,166 SF)	0.00 AC	0.00 AC	0.00 AC	0.00 AC	0.36 AC (15,744 SF)	0.39 AC (17,090 SF)	4.44 AC. (193,332 SF)



NO.	REVISION	DATE	BY
1	PER TOWNSHIP CONSULTANT REVIEW LETTERS	3/3/22	STA

SEAL

SEAL

MANAGER  
NEF

DESIGN  
AJK CHKD. BY

DRAFT  
AJK CHKD. BY

FILE  
MIK-03 DATE 11/30/21

NOTES  
SCALE AS SHOWN

**BURSICH ASSOCIATES**  
ENGINEERS, LAND SURVEYORS, LANDSCAPE ARCHITECTS  
2129 EAST HIGH STREET  
POTTSTOWN, PA 19464  
610.323.4040  
www.bursich.com

CLIENT

**MIKELEN, LLC**  
P.O. BOX 243  
FAIRVIEW VILLAGE, PA 19409  
(610) 539-8088

SUBJECT

OVERALL SUBDIVISION PLAN  
RECORD PLAN 2 OF 5

**HUGANIR PROPERTY**

WORCESTER TOWNSHIP, MONTGOMERY COUNTY, PENNSYLVANIA

JOB NO.  
208161-00

SHEET NO.  
02 OF 29

DWG. NO.  
S0108161