

# WORCESTER



# TOWNSHIP

*At the Center Point*

*of Montgomery County*

## Peak at the Week: Your Weekly Snapshot

Discover the latest happenings with our weekly e-newsletter, Peak at the Week, delivered every Friday. If you've ever found yourself curious about the events unfolding between our quarterly newsletters, this is the perfect starting point.

Signing up is a breeze—simply scan the QR code or visit the township website. Click on the "PATW Sign Up" link at the top of the home page, and you'll receive a weekly information packet directly to your email, complete with details on upcoming events, helpful tips, and road closures. Stay in the know with Peak at the Week!



IT'S TAX TIME!

### IMPORTANT DATES

County-Municipal Taxes Issued: February 1  
Discount Due Date: March 31  
Face Value Due: May 31, 2024



Pat Gramm, CPTC  
Worcester Tax Collector  
Phone: (610) 489-4070  
Fax: (610) 489-4529  
E-mail: worcestertaxoffice@gmail.com



## PERKIOMEN WATERSHED STREAM CLEAN-UP

### Volunteers Needed!

- **WHO:** Volunteers of all ages! Great for individuals and big or small groups.
- **WHAT:** Community clean-up to remove trash, tires and debris from local waterways, parks and open spaces.
- **WHERE:** Over 100 clean-up sites throughout the Perkiomen watershed.
- **WHEN:** Saturday, April 13th, 2023, 9 AM - 12 PM. Corporate volunteer day on Friday, April 12th.
- **WHY:** We need your help to preserve and protect our local waterways!



## THE STREAM CLEAN-UP TURNS 20 THIS YEAR!

Help us celebrate by making the 2024  
clean-up the largest one yet!  
Visit our website to learn more and sign-up:

[WWW.PERKIOMENWATERSHED.ORG/STREAM-CLEAN-UP](http://WWW.PERKIOMENWATERSHED.ORG/STREAM-CLEAN-UP)

APRIL  
13

9 AM - 12 PM



## Branch and Leaf Drop-Off Location-Nike Park!

The branch drop-off site is open at Nike Park, 1575 North Trooper Road, just south of Potshop Road. The location will be open two days a week, Wednesdays and Saturdays, from 10am to 2pm year-round (except when there is holiday weekend, the drop-off site will be closed Saturday).



The Township chips tree branches and makes the mulch available to Township residents at no cost. The mulch, and other materials are available for pick-up at the compost bins that are located near the Public Works Building 24/7 and at our new branch drop-off location during hours of operation. Please note the mulch must be self-loaded.

Bagged leaves in biodegradable bags are also now accepted during the site's regularly scheduled operating hours.

For more information and the most up to date schedule, please visit [www.worcestertwp.com/departments/public-works/branch-drop-off-site/](http://www.worcestertwp.com/departments/public-works/branch-drop-off-site/).

## Pavilion and Gazebo Rentals

Spring beckons for an outdoor gathering, and Heebner Park provides the perfect venue. With two pavilions and a gazebo available for rent seven days a week, from sunrise to sunset, in four-hour blocks, hosting your gatherings amidst nature has never been easier. For more details, visit our website or contact Mary Ann at (610) 584-1410. Embrace the season's bloom and create lasting memories in the scenic surroundings of Heebner Park.



## "WHO GETS THE PROPERTY TAXES THAT I PAY?"

It's a question we often receive at the Township Building, because the collection of real estate taxes can be a little confusing. So here's the skinny...

A real estate tax bill includes three separate taxes; the property tax that's levied by the county, the property tax that's levied by the school district, and the property tax that's levied by the municipality. Each entity has a different tax rate, so each entity receives a different percent of the total taxes paid.

**So who gets the property taxes that are paid by property owners in Worcester Township?**

**88.7%** goes to the **Methacton School District**. *School districts usually have the highest tax rate.*

**11.2%** goes to **Montgomery County**. *This includes the County's community college tax.*

**0.1%** goes to **Worcester Township**. *We have the lowest property tax rate of any municipality in Montco!* 🐣

# PLANT SALES

**Tuesday, April 23rd**  
**Tuesday, April 30th**  
**Tuesday, May 7th**  
**Tuesday, May 14th**

**8AM - 2:30PM**

**Herbs, flowering annuals, vegetables, cookies, spice jars, sugar scrubs and seed bombs!**

**Variety - the Children's Charity of the Delaware Valley**  
**2950 Potshop Road**  
**Worcester, PA**

*Look for us in the second parking lot on your left, rain or shine!*

Cash, check  
Venmo & PayPal accepted

## JOIN US FOR COMMUNITY DAY 2024

Worcester Township's Most Anticipated Event is Back!

### Theme: Wheels of Worcester

Attention Worcester Township residents and friends! Get ready to mark your calendars because the beloved Community Day is returning on Saturday, September 28th, 2024, from 11am-3pm (Rain Date is Sunday the 29th, 11am-3pm). After a brief hiatus, we are thrilled to announce the triumphant return of this annual extravaganza, promising a day filled with fun, laughter, and togetherness. The event will be held in Heebner Park, 1721 S. Valley Forge Road. Additional parking is available on Heebner Road.



### What is Community Day?

For those unfamiliar, Community Day is an event hosted by Worcester Township, Pennsylvania, designed to celebrate the spirit of unity and camaraderie among its residents. It's a day where neighbors come together to enjoy a wide array of activities, entertainment, and delicious food, all while fostering a sense of belonging and connection within our community.

### Exciting Activities for All Ages

Prepare to be entertained with a plethora of activities suitable for every member of the family. From games to live performances by local talents, there will be no shortage of entertainment throughout the day.

For the little ones, a dedicated Kids Zone will feature face painting, balloon twisting, and interactive games to keep them enthralled and entertained. Meanwhile, adults can indulge in browsing through the vendor booths or participate in friendly competitions.

### Supporting Local Businesses and Organizations

Community Day is not only about having fun but also about supporting the local businesses and organizations that make Worcester Township thrive. Many of the vendors and performers participating in the event are members of our community, and your patronage helps to support their endeavors and contributes to the local economy. We'd also like to thank our many sponsors who help defer the cost of this community event. If you are interested in sponsorship opportunities or a vendor spot, please reach out to the Township at (610) 584-1410. All sponsors will be recognized throughout the event.

We thank our partners at Skippack EMS, Worcester Fire Department and Fire Police, and the Pennsylvania State Police, Troop K barracks who provide safety and security for the event.

### Join Us for a Day of Community Spirit

Don't miss out on the opportunity to celebrate the vibrant spirit of Worcester Township at Community Day 2024. Whether you're reconnecting with old friends, making new ones, or simply enjoying a day of leisure with your family, this event promises to be a highlight of the year. So, gather your loved ones, and come join us for a day of fun, laughter, and community spirit. We can't wait to see you there! 🏎️

## Tennis Anyone?

The always-popular PSCTA youth tennis program returns in 2024! Children ages 10 & under can learn the sport and develop skills with help of professional coaches from the Penn Suburban Community Tennis Association.



Here are the sessions that will be offered this year...

**Open House: Sunday, April 7th**  
**11:00am-12:00pm**

*Township should take registrations, no cost to township.*

**Regular classes start on Wednesdays.**

**Session 1: April 17th-May 15th**  
*(May 22nd make-up date)*

**Session 2: June 5th-July 3rd**  
*(July 10th make-up date)*

**Session 3: July 24th-August 21st**  
*(August 28th make-up date)*

**Session 4: September 11th-October 9th**  
*(October 16th make-up date)*

All sessions take place at the Heebner Park tennis courts. Children ages 5 to 8 will play from 5:15 to 6:00pm, and children ages 9 and 10 will take to the courts from 6:00 to 7:00pm. \$70 for residents, \$75 for non-residents.

To register complete and submit a Recreation Activity Form, available at [worcestertwp.com](http://worcestertwp.com).

Questions? Contact Dustin at (610) 584-1410, or by e-mail at [DSchreiber@worcestertwp.com](mailto:DSchreiber@worcestertwp.com).

## Subdivision & Land Development Update

The following projects are now under review:

- **Palmer** – Seven commercial lots and one residential parcel at Skippack Pike & Valley Forge Road.
- **Palmer Village** – An eleven-lot single-family detached home subdivision, with a bank, convenience store, and pharmacy, at Skippack Pike & Valley Forge Road.

The following subdivision and land development projects are among those receiving approval in the recent years, and construction has not yet begun:

- **Stony Creek Village** – Office, retail, and restaurant buildings at North Wales Road & Township Line Road.
- **BET/City View Apartments** – 144 apartment units at Germantown Pike and Rt. 363.

The following approved subdivision and land development projects are now under construction:

- **Reserve at Center Square** – A residential subdivision at Skippack Pike that includes 125 townhomes and 125 single-family detached homes.
- **Horgan Brothers (2044 Berks Rd)** – An eight-lot single-family detached home subdivision at Berks Road.
- **Bellflower (formerly Zacharczuk)** – 16-lot single-family detached subdivision at Skippack Pike.
- **Huganir** – An eight-lot single-family detached home subdivision at Artmar Road.

## SPRING YARD CARE TIPS FOR WATER QUALITY

Here are some tips from the Penn State Extension to consider when thinking about spring projects that can enhance water quality and manage stormwater.

- **Cleanup** – Collect and properly dispose any stray trash winter winds may have left behind. Mulch or compost fallen leaves and garden cuttings you missed in the fall so they don't get washed away during a spring storm and end up in a stream or lake where they can lower oxygen levels.
- **Patch Grass** – Inspect for bare spots in your lawn and landscape beds, especially if they are located on a hillside. A thick lawn produces less runoff than a thin lawn with exposed soil. Reseed grass in mid-spring, when the threat of hard frost is past but it's still too early for most weeds to grow. Add a layer of mulch to bare planting beds anytime, and consider planting them permanently with native meadow plants or groundcover before summer heat arrives.
- **Mulch Clippings** – Grass clippings are a free source of nitrogen fertilizer, so let them decompose into your lawn.
- **Mow Sharp and High** – A sharp mower blade cut grass cleanly which improves turf health and promotes denser growth. Setting the mower deck high, 2 ½ inches or more, helps lawn grass shade-out weeds and survive dry spells reducing the need for weed control and irrigation.
- **Sweep Away Clippings and Fertilizer** – Use a leaf blower or a broom to push stray grass clippings and fertilizer granules off sidewalks and driveways onto your lawn where they can do some good. Otherwise, they turn into runoff pollution when they wash into storm sewers, ditches, and streams.
- **Plant Trees and Shrubs** – Spring is a good time to plant native trees and shrubs which provide important water quality benefits. They reduce stormwater when their leaves intercept rainfall, increase infiltration when their roots

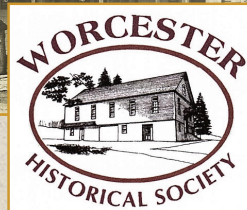
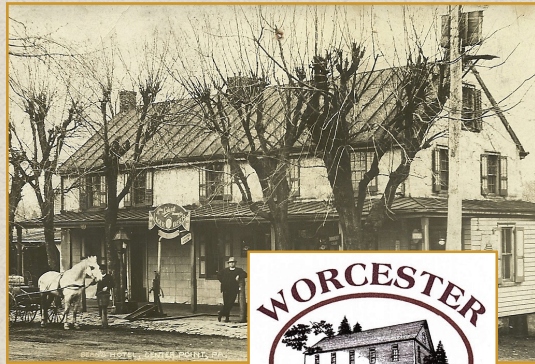


penetrate the soil, and filter pollutants in the rich leaf litter that gradually develops beneath their canopy. If you plant them along the edges of your lawn, they also gradually shrink the total area you need to mow!

- **Aerate Turf** – Grass does best, and traps more stormwater, when it grows in loose soils. Surprisingly, many home lawn soils are just the opposite. They're often compacted from years of heavy use including outdoor parties, riding mowers, small tractors, and even parked cars. If your grass struggles despite proper fertilization and watering, compaction may be the problem. Core aeration is a process that removes finger sized soil plugs from the top layer of a lawn so air and rainwater can support better root growth. Most yard care companies offer core aeration as a service and many garden centers rent the equipment for ambitious DIY's.
- **Go Big** – Is this your year to install a major water quality practice on your yard? Possibilities include replacing turf with native meadow plants; protecting a stream or drainage swale with native trees and shrubs; capturing the discharge from your downspouts in a rain garden, or rain barrel; or redirecting any downspouts that currently spill onto sidewalks or a driveway into your lawn or planting beds so the stormwater soaks into the ground instead of running off. Finishing these projects in the spring means you get to watch them provide water quality benefits before winter returns. 🍂

## WORCESTER HISTORICAL SOCIETY

The WHS Annual Spring Meeting is scheduled for Sunday, April 21, from 2:00 to 4:00pm, at the Farmers Union Hall. The title of our program is “Colonial Brewing and Worcester Taverns.” It will focus on the history of our local Worcester Taverns and will share the important role of beer and brewing for the Colonial Soldiers. Also, the museum will be open with new exhibits. All are welcome! Please check our website: [www.worcesterhistorical.org](http://www.worcesterhistorical.org) for more details or follow us on Facebook.



### WHS 2024 Flea Market

Keeping with our long tradition, The Worcester Historical Society will hold its annual May Flea Market on May 4th. There all be vendors carrying all types of merchandise from antiques, to newly made crafts. People will be there with clean-outs, estate leftovers, and one-of-a-kind items.

Join returning sellers and see some new faces. As always, there will be freshly made baked goods and what has turned out to be our very popular hotdogs & Beef BBQ.

### Worcester Historical Society Flea Market

**Saturday, May 4, 2024**  
8:00am–2:00pm

Community Hall in Fairview Village  
Parking Lot, 1031 Valley Forge Road  
*Please enter from 3020 Griffith Road.*

*Rain or Shine • Free Parking*

Visit our website for vendor information,  
[www.worcesterhistorical.org](http://www.worcesterhistorical.org).  
*Click on Flea Market Photo*

Questions? Contact Debbie Kavanaugh  
at 610-613-3878.

### 2024 Road Improvement Program

This year, Worcester Township will continue implementation of its annual road improvement program. This program is designed to maximize the useful life of infrastructure through an aggressive maintenance plan and appropriately-scheduled capital improvements. The program, which includes a maintenance plan and a capital plan, allows the Township to maintain more than fifty-five miles of roads in good condition.

The maintenance plan includes pothole repair, street sweeping, roadside brush trimming, roadside swale maintenance and patch milling.

The capital plan includes the replacement and installation of culverts and stormwater pipes, and the resurfacing and reconstruction of roads. On average, the Township resurfaces and/or reconstructs between three and five miles of roadways each year.

The number of roads treated depends on many factors, including the extent of repairs needed, the cost of materials, and the damage done during the winter months. As such, road projects are often subject to change.

At this time projects proposed in 2024 include the repaving of:

- Ayershire Drive
- Conrad Way
- Dotts Way
- Drake Road
- Locust Drive
- Mann Road
- Nyce Way
- Schied Way
- Sunny Ayre Drive
- Warner Road
- Weigner Road
- Shearer Road

When the list of roads to be resurfaced is confirmed this information will be posted to the Township website. Motorists using the above-noted roads may experience delays during construction. We thank you for your understanding and patience as we work to improve our community's roadways.

## CANDY CONTEST

Congratulations to Lily Yoon, the lucky winner of the candy in the fishbowl! She correctly guessed the exact number of candy pieces, which was 295.

If you'd like to try your luck, feel free to stop by the municipal building between 7:00 AM and 4:30 PM, Monday to Friday, to take a guess of your own. The next contest will end April 26th.



## When Do I Need a Permit?

Worcester Township helps preserve and improve the quality of life for residents and businesses within the



community through the enforcement of the codes and ordinances of the Township. One of the ways the Township makes sure codes and ordinances are being followed is through the use of building permits.

When do you need a permit? The Township requires a building for any addition, alteration, demolition, replacement or new construction prior to the start of any work.

Below is a list of some common projects that require a permit:

- New construction
- Additions & interior renovations
- Electric & plumbing improvements
- HVAC & hot water heater installations
- Decks, patios & walkways
- Fences
- Gas fireplaces
- Swimming pools & hot tubs
- Sheds
- Detached garages
- Whole-house generators
- Grading (over 500 square feet)

After the building permit is issued and work begins, the Township will inspect the improvements to ensure the work done meets the approved plans. The required inspections will be listed on the permit.

To schedule inspections, please contact the Township at (610) 584-1410 at least 48 hours in advance. Inspections are scheduled on first-come, first-served basis. Please have the property address or permit number, inspection type, and contact name and phone number readily available when scheduling.

For permit applications, please visit [www.worcestertwp.com](http://www.worcestertwp.com). For more information about the permitting process contact the Township Building at (610) 584-1410, or by e-mail at [mmurray@worcestertwp.com](mailto:mmurray@worcestertwp.com).

## HOME COOKIN' AT MEADOWOOD

By Grace Smith, Resident at Meadowood Community

This flan recipe was shared with me in the 1960's by my first husband's mother, Jesus Maria Gonzales-Garnica. Her heritage was Andalusian, the southernmost independent state in Spain. It is mostly agricultural with Seville and Granada as its historic city's. Its claims to fame are flamenco, bullfighting, scorching summer heat, and delicious food. Many of their classic dishes were developed when refrigeration was not possible so the best way to enjoy your milk and eggs was to cook them. And what could be more delicious and wholesome than a baked custard topped with caramelized sugar.



Flan d'Andalusia is made from fresh milk, fresh cream, vanilla, sugar, and plenty of eggs. It is a simple recipe; it's sweet, creamy, nourishing, and pretty. From las bebes to los bisabuelos (babies to great grandfathers), everyone enjoys this dessert.

I hope you will too.  
- Grace Smith

### Flan d'Andalusia

Preheat Oven to 350 degrees.

#### INGREDIENTS:

8 eggs large  
2 cups of Sugar  
1 cup of half & half or full cream  
1 tsp. of Vanilla  
2 cups whole milk

#### PREP:

Put a cup of sugar into a skillet over medium high heat. When sugar begins to melt, stir with fork or silicon spatula until it is fully melted & begins to turn amber. Pour IMMEDIATELY into an eight-cup baking dish. Using hot pads, gently rotate the dish so the sugar syrup coats the sides of the dish.

Whisk the eggs together in a large bowl. Pour in the milk, half & half, remaining cup of sugar, and teaspoon of vanilla. Whisk until well blended.

Place the baking dish in a roasting pan, add boiling water to the roasting pan about halfway up the side of the baking dish. Bake for 50-60 minutes in a 350 oven until the center is still somewhat jiggy but the edge is set. Remove from water bath, cool on rack for 30 mins then refrigerate for at least 8 hours.

Run a thin knife around the edges to unmold. Hold a serving plate or platter with a slight edge on top of the baking dish. Flip over and flan should slowly release from the edges and drop on the plate. The caramel should be runny.

**TO SERVE:** Cut into pie shaped wedges. Decorate with raspberries, sliced strawberries, piñon nuts, sliced fruit twists...any small edible you think is pretty. 🍷



# HOUSEHOLD HAZARDOUS WASTE

## 2024 Montgomery County, PA Residential Events

**By Appointment Only. Preregistration is Required. Register at [www.MontcoPARecycles.org](http://www.MontcoPARecycles.org).**

**FREE** residential collection events are held outdoors. There are no permanent drop off locations, only these collection events. Montco residents may also attend any Household Hazardous Waste event held by Bucks, Chester, Delaware, or Philadelphia Counties. Please do not contact the host sites, as they are not affiliated with the events. In case of severe weather, call 610.278.3618, option 6 for event status. Contact us at: [Recycling@MontgomeryCountyPA.gov](mailto:Recycling@MontgomeryCountyPA.gov) or 610.278.3618.

### 2024 DATES:

**Saturday, April 27**

**Indian Valley Middle School**  
130 Maple Avenue, Harleysville

**Saturday, June 1**

**Temple University–Ambler Campus**  
Enter at 1431 E. Butler Pike, Ambler

**Saturday, June 15**

**Abington Middle School**  
Enter at 2056 Susquehanna Road,  
Abington

**Saturday, June 22**

**Norristown Area High School**  
1900 Eagle Drive, Norristown

**Saturday, September 21**

**Spring-Ford 9th Grade Center**  
400 South Lewis Road, Royersford

**Sunday, October 13**

**Lower Merion Transfer Station**  
1300 N. Woodbine Avenue, Penn Valley

### Drop-Off Guidelines:

- Montgomery County events are following state guidelines and public health restrictions.
- Leave items at home that are not for the event so that they are not removed accidentally.
- If you need your gas can or container returned, please tape a note to it stating that you want to keep it.
- You may arrive any time within your registered appointment window.
- Please print out your ticket or write your name and appointment time on a piece of paper.
- If you cannot attend the event, please cancel your appointment through your Eventbrite ticket or by emailing [Recycling@MontgomeryCountyPA.gov](mailto:Recycling@MontgomeryCountyPA.gov), as others may be waiting for an opening.
- NO TVs, electronics, or appliances will be accepted.
- Event workers will unload your materials so please remain in your vehicle.
- **BUSINESSES AND CONTRACTORS WILL BE TURNED AWAY**, no commercial/industrial waste accepted.
- Bring all substances in original containers with labels. Items must be identifiable. Do not mix materials.
- Tighten lids on all containers. If containers are leaking, pack in larger container with newspaper to soak up leaks.
- NO 25- OR 50-GALLON DRUMS ALLOWED. Five-gallon buckets are the largest acceptable container. Maximum amount accepted per vehicle is 25 gallons or 220 pounds.
- There are no permanent drop off locations in the region for household hazardous waste, only the listed collections.

### ACCEPTABLE HOUSEHOLD MATERIALS

PAINT PRODUCTS	OUTDOOR PRODUCTS	AUTOMOTIVE PRODUCTS	HOUSEHOLD PRODUCTS	HOUSEHOLD OTHER
Turpentine	Swimming Pool Chemicals	Grease & Rust Solvents	Drain Openers	Acids, Caustics, Solvents
Paint Thinners	Weed Killers	Fuel Additives	Rug Cleaners	Flammables
Strippers & Removers	Septic Tank Degreasers	Carburetor Cleaners	Wood & Metal Cleaners	Oxidizers, Reactives
Oil-Based Paints	Asphalt Sealers	Transmission/Brake Fluid	Mothballs/Flakes	Lead
Stains, Varnish	Caulking Compounds	Antifreeze	Adhesives/Solvents	Aerosols
Shellac	Joint Compound	Car(lead-acid), Truck, Motorcycle, Marine, Batteries	Rechargeable Batteries, Lithium, Ni-Cad, Button, Lead Acid	Mercury (Thermostats & Thermometers)
Other Solvent-Based Paint Products	Roof Cements	Gas, Oil, Gas Oil Mixture	Spot Removers, Dry Cleaning Fluid	Fluorescent Tubes and CFLs
Wallpaper Cement	MINI Propane Tanks, No BBQ Tanks	Road Flares, No Marine Flares	Fire Extinguishers	Ballast (must be removed from light fixture)
Spray Paint	Pesticide		Kerosene	Electric Oil-filled Heaters

### UNACCEPTABLE MATERIALS

Explosives & Ammunition	Electronics/Televisions	Asbestos	Appliances/White Goods
Infectious or Medical Waste, Prescription Drugs	BBQ-Sized Propane Tanks (leave at local exchange sites)	Radioactive Waste	Freon/Refrigerants
Tires	Helium Tanks	Unidentified Waste	25- or 50-Gallon Drums
Latex Paint* (Water-Based)	Gas Cylinders	Alkaline Batteries (Trash)	Smoke Detectors

\* Take off lid, dry out paint, discard can without lid; or pour paint into plastic bag with absorbent material (clay based kitty litter, saw dust, rags) place bag and can without lid, in trash. Paint hardener can also be purchased at hardware stores.



*At the Center Point*

*of Montgomery County*

1721 VALLEY FORGE ROAD  
P.O. BOX 767  
WORCESTER, PA 19490

Presorted  
Standard Mail  
U.S. Postage PAID  
Permit #50  
West Chester, PA

HOURS: 7:00 AM-4:30 PM  
PHONE: (610) 584-1410  
FAX: (610) 584-8901  
WORCESTERTWP.COM

#### BOARD OF SUPERVISORS

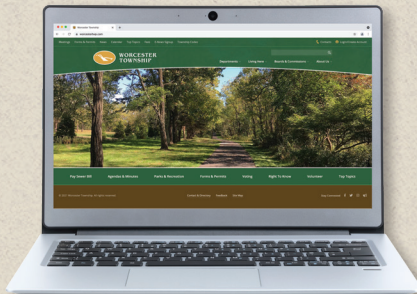
Richard DeLello, Chair  
Lou Betz, Vice Chair  
Stephen Quigley, Member

## Get Connected and Stay Informed!

There are many ways to get connected and stay informed about the happenings around Worcester Township!

- Our award-winning newsletter (*you are reading now!*) is mailed to every household in the Township four times a year.
- Our website, [worcestertwp.com](http://worcestertwp.com), provides the most up-to-date information on public meetings, proposed land developments, community events, road projects, and much more! Check out Top Topics (*at the top of home page*) for in-depth information on key projects throughout the Township.
- **Weekly e-mail updates.** For weekly updates sent directly to your inbox, sign-up for the Peek at the Week! *To enroll simply click the link at the top of our home page.*

As you can see, there is so many ways to get connected and stay informed depending on what works for you! If you have any questions about Township communications please contact Sean Halbom at (610) 584-1410, or by e-mail at [shalbom@worcestertwp.com](mailto:shalbom@worcestertwp.com).



## Boy Scout Troop 133 Easter Egg Hunt

Saturday, March 23rd at 10am  
Heebner Park  
*Rain Date: Sunday, March 24th at 1pm*

Making a very special appearance this year will be the Easter Bunny, so grab a big basket and hop on down to Heebner Park! The event is FREE and open to children of all ages.